

Integration with smart building management systems...



SPRVSR+ Plug-In and ACC Integration

With the development of technology; For different types of spaces, from shopping malls to airports, from large hotel chains to hospitals, universities, and risky structures such as industrial facilities; The need to manage systems with different mechanical and electronic features from a single center has occurred. Integrated operation of systems serving different purposes such as elevators, security cameras, card passes, fire detection and alarm systems is possible with framework software. These software, which offer solutions to the need for management from a single center, become much more preferred as a result of the technological partnerships of expert system manufacturers.



Mavili Elektronik has been developing products and services in the field of fire and gas detection systems since 1987; It offers solutions to this need by producing products that are included in smart building technology and can work integrated.

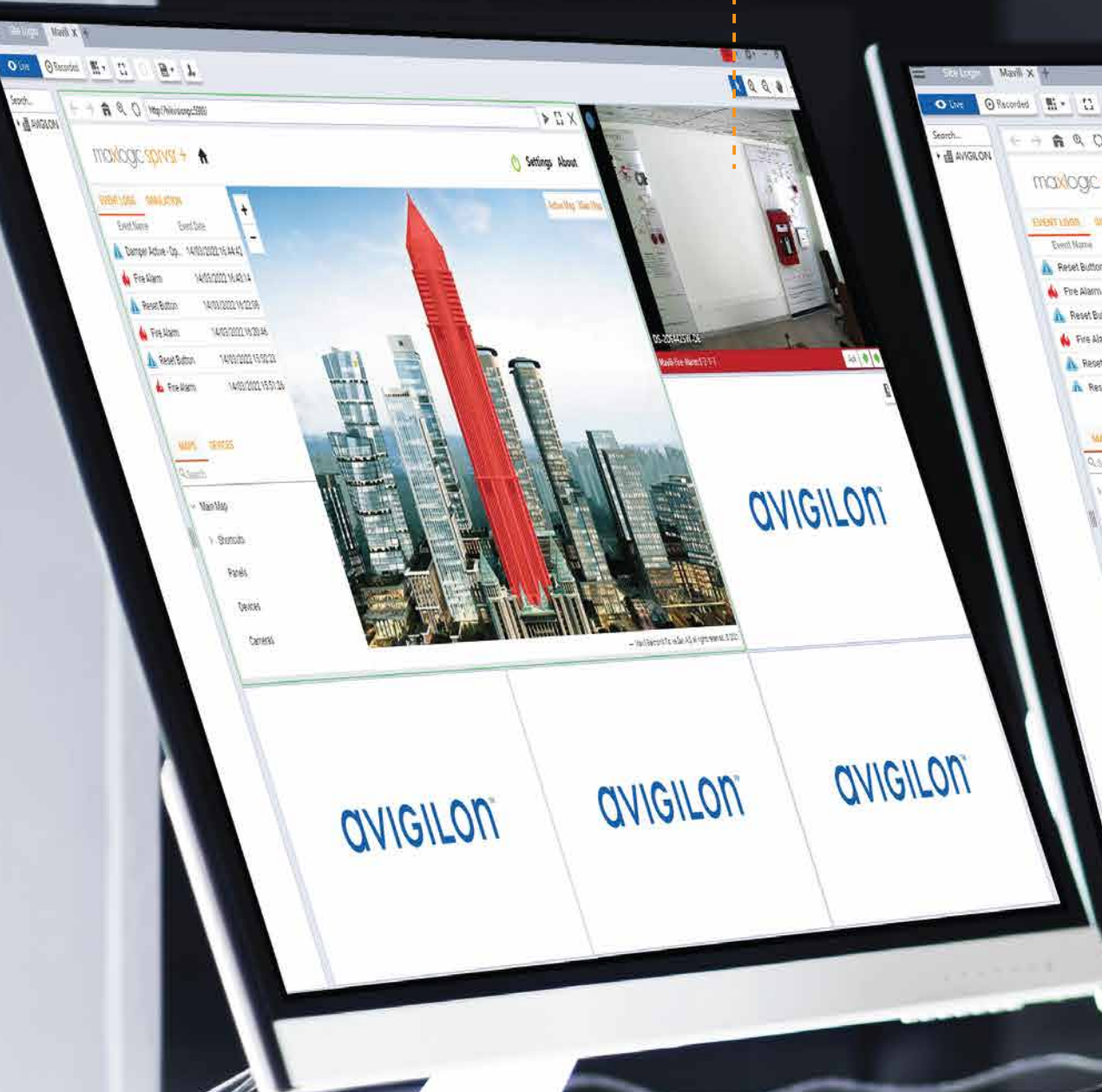
Mavili's Maxlogic SPRVSR+ Plug-In software is integrated into Avigilon's ACC framework software. Thus, detailed map and device information of the location to be monitored and controlled can be accessed through this software.

- ▶ Maxlogic & Mavigard brand fire detection and alarm devices can be displayed graphically on the floor plan
- ▶ Access to detailed map and device information of the location
- ▶ Ability to realize all interventions that can be made with the panel
- ▶ Ability to switch between maps Automatically or manually
- ▶ In case of fire, fire information is displayed on the pop-up screen
- ▶ Displaying the location with fire information from the cameras that match the device where the fire alarm is coming from

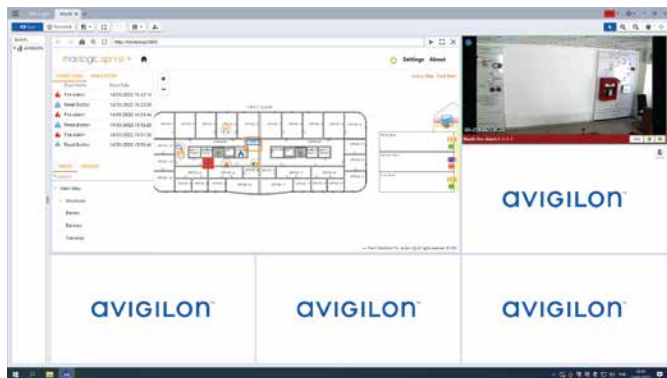
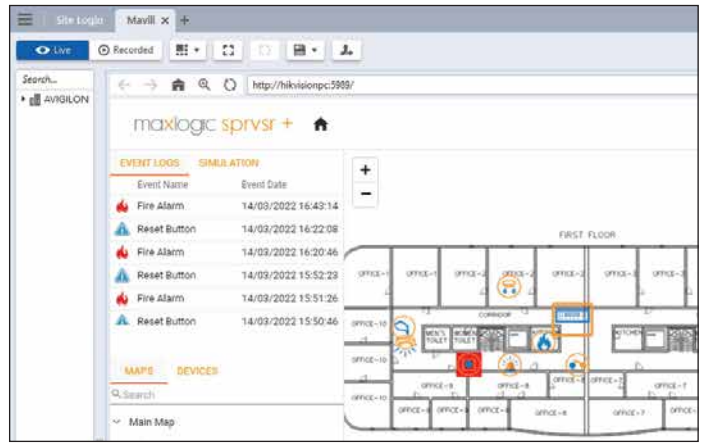
maxlogic & mavigard
fire and gas detection systems

The camera or cameras that match the device from which the fire alarm came will automatically open in the camera window. In this way, the fire information is displayed by the incoming room cameras.

In the section below the event records, there is a map of the areas where the monitoring was done. In case of fire, it is possible to switch between maps automatically; If desired, switching between maps can also be made manually. When it comes to the devices on the map, the device code, device name, network address, panel information, address information can be accessed.



There is the section where event records of the fire detection system are kept in the upper left corner. In this area, data such as system interventions and event records are kept.



Let's see how the system works in case of a fire;

The point where the fire alarm came from starts flashing on the map and automatically switches to the lowest scale of the map in the specified order. The camera or cameras that match the device from which the fire alarm came will automatically open in the camera window. In this way, the fire information is displayed by the incoming room cameras. After the location of the fire information is displayed on the map, the fire alarm panel on the map is clicked to intervene in the system. **“Reset, Buzzer Cancel, Alarm Cancel, Alarm and Evacuation”** commands can be sent to the system from the opened window.

Being a solution partner of Mavili and Motorola Solutions company **Avigilon**, which designs solutions for video management software and access control system has made an important difference in ensuring the safety of life and property against fires that may occur in areas where smart building technology is used.



SOFTWARE MODELS

Product Code	Description
ML-1634.1	Maxlogic SPRVSR+ Graphic Monitoring and Control Android Software using cost, 1 user
ML-1634.5	Maxlogic SPRVSR+ Graphic Monitoring and Control Android Software using cost, 5 user
ML-1634.10	Maxlogic SPRVSR+ Graphic Monitoring and Control Android Software using cost, 10 user
ML-1635.1	Maxlogic SPRVSR+ Graphic Monitoring and Control IOS Software using cost, 1 user
ML-1635.5	Maxlogic SPRVSR+ Graphic Monitoring and Control IOS Software using cost, 5 user
ML-1635.10	Maxlogic SPRVSR+ Graphic Monitoring and Control IOS Software using cost, 10 user
ML-1636.11	Maxlogic SPRVSR+ Plug-In Graphical Monitoring Software using cost, Avigilon Control Center Integration

DONGLE MODELS

Product Code	Description
ML-1661.1	Maxlogic Sprvsr+ Master USB Dongle
ML-1661.2	Maxlogic Sprvsr+ Slave USB Dongle
ML-1661.3.11	Maxlogic SPRVSR+ Plug-In USB Dongle using cost, Avigilon Control Center Authorization

